

**AMMONITE**<sup>®</sup>  
S Y S T E M



Product  
Catalogue

2020



for more  
check our  
websites

# Table of Contents

## UMBILICAL LIGHTS 4 - 11

LED NAUTILUS	4 - 5
LED SOLARIS NEXTGEN	6 - 7
LED HELIOS	8 - 9
LED SPELEO	10 - 11

## BATTERIES 12 - 13

ACCU TYPE 9	12 - 13
ACCU TYPE 10	12 - 13
ACCU TYPE 14	12 - 13
ACCU TYPE 24	12 - 13

## ACCU THERMO 14 - 19

ACCU THERMO TYPE 14	14 - 15
ACCU THERMO TYPE 24	16 - 17
ACCU THERMO TYPE 24 SPECIAL	18 - 19

## COMPACT TORCHES 20 - 25

LED STINGRAY	20 - 21
LED ONE	22 - 23
LED ONE MINI	22 - 23
LED STINGRAY VIDEO SET	24 - 25

## ACCESORIES 26- 31

CLICK MOUNT	26 - 27
GOODMAN MODULAR	28 - 29



for more  
check our  
website

# About Ammonite System

Offering the highest quality primary and secondary underwater lighting, and heating, Ammonite System provides explorers, leaders and those looking to develop and expand the boundaries of diving, with the ability to dive safely and comfortably within exceptional environments, allowing them to experience dive exploration to the full.


Piotr Stępkowski  
owner

Aleksander Chodakowski-Malkiewicz  
owner

# LEDNAUTILUS



  
40 W  
total power

  
9° - 45°  
focus angle

  
up to  
4000 lm  
light output

# The regular umbilical light kit contains\*:

- charger
- hex keys
- chosen battery
- chosen headlamp
- spare plug o-rings
- plastic carrying case
- HD connecting cable

\*the content of the kit can be freely modified during the ordering



for more check our website

## LED NAUTILUS kits



+ LED NAUTILUS ACCU TYPE 9



+ LED NAUTILUS ACCU TYPE 10

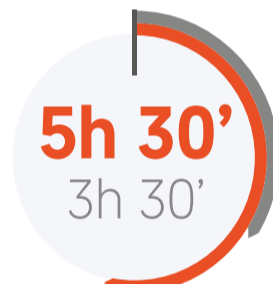
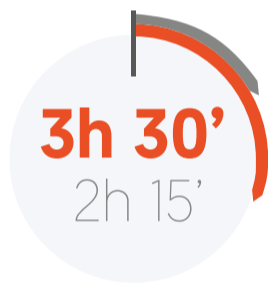


+ LED NAUTILUS ACCU TYPE 14



+ LED NAUTILUS ACCU TYPE 24

## OPERATING TIME



■ measured in operational mode  
■ measured in boost mode

## ACCESORIES



HEAVY DUTY CABLE



90° SIDEMOUNT CONNECTING CABLE



E/O CONNECTING CABLE



CLICK MOUNT



MODULAR GOODMAN HANDLE



GOODMAN HANDLE STANDARD



GOODMAN HANDLE SOFT

## SPECIFICATION

light output	up to 4000 lm
focus angle	9° - 45°
type of optics	focusable fresnel lens
total power	40 W
light source	1 x CXB 1520 LED CREE®
colour temperature	cool white
power source	external rechargeable battery
material	hard anodised aluminium / Delrin

switch type	magnetic switch 3 levels of light intensity discharge warning message take me home mode mode
max. length	140 mm
max. diameter	60 mm
front glass	5mm tempered
weight	415 g
weight in water	150 g
max.operation depth	150 m

## UMBILICAL LIGHTS

# LED SOLARIS

4500 lm / 50 W  
NEXTGEN



  
50 W  
total power

  
6°  
spot angle

  
up to  
4500 lm  
light output

# The regular umbilical light kit contains\*:

- charger
- hex keys
- chosen battery
- chosen headlamp
- spare plug o-rings
- plastic carrying case
- HD connecting cable

\*the content of the kit can be freely modified during the ordering



for more check our website

OPERATING LED SOLARIS NEXTGEN kits



LED SOLARIS NEXTGEN  
+ ACCU TYPE 9



LED SOLARIS NEXTGEN  
+ ACCU TYPE 10

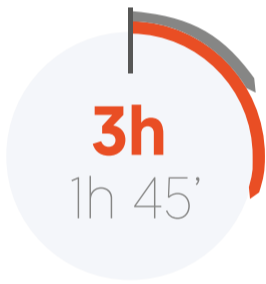


LED SOLARIS NEXTGEN  
+ ACCU TYPE 14



LED SOLARIS NEXTGEN  
+ ACCU TYPE 24

TIME



■ measured in operational mode  
■ measured in boost mode

ACCESORIES



HEAVY DUTY CABLE



90° SIDEMOUNT  
CONNECTING CABLE



E/O CONNECTING  
CABLE



CLICK MOUNT



MODULAR GOODMAN  
HANDLE



GOODMAN HANDLE  
STANDARD



GOODMAN HANDLE  
SOFT

SPECIFICATION


light output	up to 4500 lm
spot angle	6°
corona	noticeable corona effect
type of optics	5 x LED reflector
total power	50 W
light source	5 x XPL HI LED CREE®
colour temperature	cool white
power source	external rechargeable battery

material	hard anodised aluminium / Delrin
switch type	magnetic switch 3 levels of light intensity discharge warning message take me home mode mode
max. length	117 mm
max. diameter	61 mm
front glass	6mm tempered
weight	340 g
weight in water	130 g
max.operation depth	200 m

# LEDHELIOS 3000 lm 35W



  
35W  
total power

  
11°  
beam angle

  
up to  
3000 lm  
light output



# The regular umbilical light kit contains\*:

- charger
- hex keys
- chosen battery
- chosen headlamp
- spare plug o-rings
- plastic carrying case
- HD connecting cable

\*the content of the kit can be freely modified during the ordering



for more check our website

## LED HELIOS kits



LED HELIOS  
+ ACCU TYPE 9



LED HELIOS  
+ ACCU TYPE 10

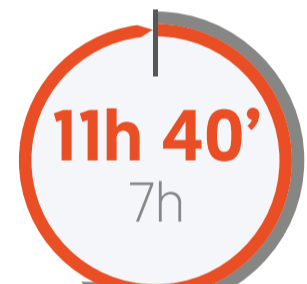


LED HELIOS  
+ ACCU TYPE 14



LED HELIOS  
+ ACCU TYPE 24

## OPERATING TIME



■ measured in operational mode  
■ measured in boost mode

## ACCESORIES



HEAVY DUTY CABLE



90° SIDEMOUNT  
CONNECTING CABLE



E/O CONNECTING  
CABLE



CLICK MOUNT



MODULAR GOODMAN  
HANDLE



GOODMAN HANDLE  
STANDARD



GOODMAN HANDLE  
SOFT

## SPECIFICATION

light output	up to 3000 lm
beam angle	11°
type of optics	1 x tripple lens
total power	35 W
light source	3 x XPL LED CREE®
colour temperature	cool white
power source	external rechargeable battery
material	hard anodised aluminium / Delrin


switch type	magnetic switch 3 levels of light intensity discharge warning message take me home mode mode
max. length	101 mm
max. diameter	48 mm
front glass	6 mm tempered
weight	223 g
weight in water	100 g
max.operation depth	200 m

## UMBILICAL LIGHTS

# LED SPELEO



  
10 W  
total power

  
6°  
spot angle

  
up to  
1300 lm  
light output

# The regular umbilical light kit contains\*:

- charger
- hex keys
- chosen battery
- chosen headlamp
- spare plug o-rings
- plastic carrying case
- HD connecting cable (standard length 1.2 m)

\*the content of the kit can be freely modified during the ordering



for more check our website

## LED SPELEO kits



LED SPELEO  
+ ACCU TYPE 9



LED SPELEO  
+ ACCU TYPE 10



LED SPELEO  
+ ACCU TYPE 14



LED SPELEO  
+ ACCU TYPE 24

## OPERATING TIME



■ measured in operational mode  
■ measured in boost mode

## ACCESORIES



HEAVY DUTY CABLE



90° SIDEMOUNT  
CONNECTING CABLE



E/O CONNECTING  
CABLE



CLICK MOUNT



MODULAR GOODMAN  
HANDLE



GOODMAN HANDLE  
STANDARD



GOODMAN HANDLE  
SOFT

## SPECIFICATION

light output	up to 1300 lm
spot angle	6°
corona	mild corona effect
type of optics	1 x reflector
total power	10 W
light source	1 x XML2 LED CREE®
colour temperature	cool white
power source	external rechargeable battery
material	hard anodised aluminium / Delrin

switch type	magnetic switch 3 levels of light intensity discharge warning message take me home mode mode
max. length	116 mm
max. diameter	53 mm
front glass	6 mm tempered
weight	265 g
weight in water	100 g
max.operation depth	200 m

## UMBILICAL LIGHTS

# ACCU TYPE



3 years  
warranty



operation  
depth

100 M / 200 M

12V  
nominal 10,95V

# OPERATING TIME\*

■ measured in operational mode  
■ measured in boost mode

ACCU TYPE 9

ACCU TYPE 10

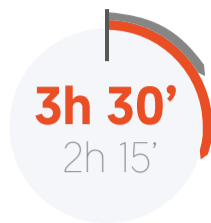
ACCU TYPE 14

ACCU TYPE 24

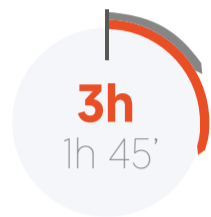


for more check our website

## LED NAUTILUS



## LED SOLARIS



## LED HELIOS



## LED SPELEO



## ACCESORIES



HEAVY DUTY CABLE



90° SIDEMOUNT CONNECTING CABLE



CLICK MOUNT



SIDEMOUNT BUCKLE



9 Ah BATTERY PACK



10 Ah BATTERY PACK



14 Ah BATTERY PACK

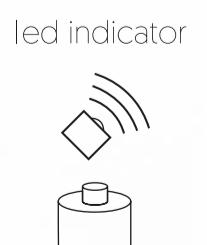
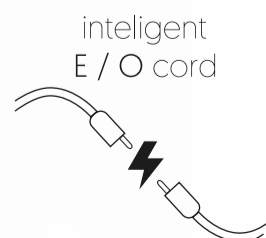
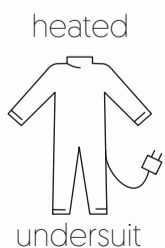
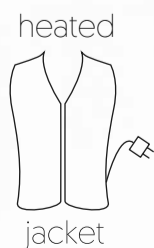


24 Ah BATTERY PACK

## SPECIFICATION

	ACCU TYPE 9	ACCU TYPE 10	ACCU TYPE 14	ACCU TYPE 24		ACCU TYPE 9	ACCU TYPE 10	ACCU TYPE 14	ACCU TYPE 24
capacity rated	8,7 Ah	9,6 Ah	13,4 Ah	23,45 Ah	max.operation depth	200 m	200 m	150 m	100 m
max. diameter	46 mm	46 mm	66 mm	66 mm	material	hard anodised aluminium / Delrin			
max. length	247 mm	247 mm	200 mm	258 mm	rechargeable battery	Li-Ion	Li-Ion	Li-Ion	Li-Ion
weight	680 g	705 g	1100 g	1400 g	charge/discharge cycles	500-700	500-700	500-700	500-700
weight in water	435 g	450 g	750 g	600 g	charger input voltage	100-240 V	100-240 V	100-240 V	100-240 V
charging time	~4 h	~4 h	~4,5 h	~8 h	over pressure valve	yes	yes	yes	yes
					nominal voltage	10,95 V	10,95 V	10,95 V	10,95 V

# ACCU THERMO TYPE 14



# OPERATING TIME

# ACCU THERMO TYPE 14

GLOVES 30 W

4h 10'

VEST 55 W

2h 20'

UNDERSUIT 110 W

1h 15'

GLOVES + VEST 85 W

1h 30'

GLOVES + UNDERSUIT 140 W

1h



for more check our website

ACCU THERMO

## ACCESORIES



HEAVY DUTY CABLE



90° SIDEMOUNT CONNECTING CABLE



CLICK MOUNT



SIDEMOUNT BUCKLE

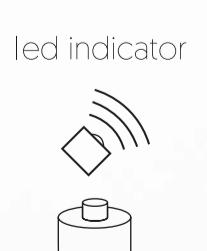
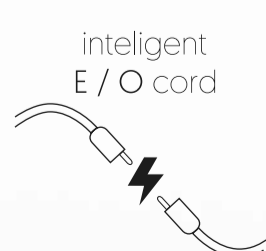
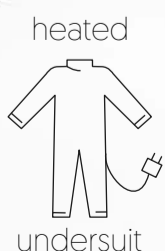
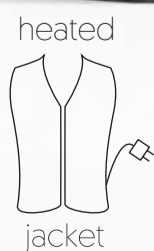
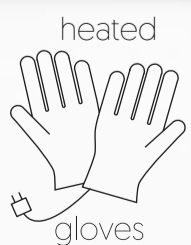


14 Ah BATTERY PACK

## SPECIFICATION

	ACCU THERMO TYPE 14	ACCU THERMO TYPE 14
capacity rated	13,4 Ah	max.operation depth 150 m
max. diameter	66 mm	material hard annodised aluminium / Delrin
max. length	200 mm	rechargeable battery Li-Ion
weight	1100 g	charge/discharge cycles 500-700
weight in water	415 g	charger input voltage 100-240 V
charging time	~4,5 h	over pressure valve yes
		nominal voltage 10,95 V

# ACCU THERMO TYPE 24





# OPERATING TIME

# ACCU THERMO TYPE 24

GLOVES 30 W

9h 40'

VEST 55 W

5h 15'

UNDERSUIT 110 W

2h 30'

GLOVES + VEST 85 W

3h 15'

GLOVES + UNDERSUIT 140 W

2h



for more check our webside

ACCU THERMO

## ACCESORIES



HEAVY DUTY CABLE



90° SIDEMOUNT CONNECTING CABLE



CLICK MOUNT



SIDEMOUNT BUCKLE

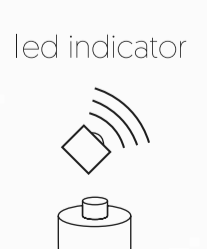
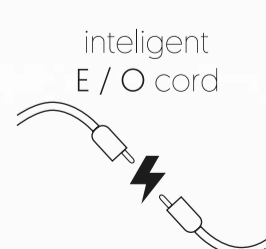
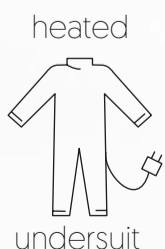
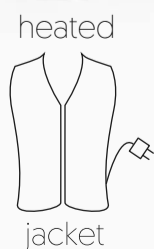
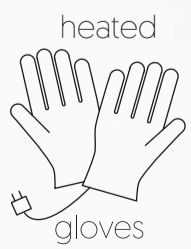


24 Ah BATTERY PACK

## SPECIFICATION

	ACCU THERMO TYPE 24	ACCU THERMO TYPE 24
capacity rated	23,45 Ah	max.operation depth 100 m
max. diameter	66 mm	material hard anodised aluminium / Delrin
max. length	262 mm	rechargeable battery Li-Ion
weight	1610 g	charge/discharge cycles 500-700
weight in water	715 g	charger input voltage 100-240 V
charging time	~8 h	over pressure valve yes
		nominal voltage 10,95 V

# ACCU THERMO SPECIAL 24



# OPERATING TIME

## ACCU THERMO TYPE 24 SPECIAL

GLOVES 30 W

9h 40'

VEST 55 W

5h 15'

UNDERSUIT 110 W

2h 30'

GLOVES + VEST 85 W

3h 15'

GLOVES + UNDERSUIT 140 W

2h



for more check our webside

ACCU THERMO

### ACCESORIES



HEAVY DUTY CABLE



90° SIDEMOUNT CONNECTING CABLE



CLICK MOUNT



SIDEMOUNT BUCKLE



24 Ah BATTERY PACK

### SPECIFICATION

	ACCU THERMO TYPE 24 SPECIAL	ACCU THERMO TYPE 24 SPECIAL
capacity rated	23,45 Ah	max.operation depth 200 m
max. diameter	66 mm	material hard annodised aluminium / Delrin
max. length	262 mm	rechargeable battery Li-Ion
weight	1800 g	charge/discharge cycles 500-700
weight in water	1100 g	charger input voltage 100-240 V
charging time	~8 h	over pressure valve yes
		nominal voltage 10,95 V

# LED STINGRAY



up to:



1000 lm  
light output

operation  
depth



200 M

3 years  
warranty





for more  
check our  
website

# LED STINGRAY

LED STINGRAY compact primary light



## LED STINGRAY BASIC SET contains:

- 1 x LED STINGRAY compact primary light
- 1 x protected rechargeable battery Li-Ion 18650/3000mA

## LED STINGRAY DELUXE SET contains:

- 1 x LED STINGRAY compact primary light
- 2 x battery Li-Ion 18650/3000mA
- 1 x pouch for storage batteries
- 1 x USB charger
- 1 x power supply unit + micro USB cable
- 1 x stainless steel bolt snap
- 1 x set of 6 colorful silicone bands



# SPECIFICATION

light output	up to 1000 lm	material	hard anodised aluminium / Delrin
spot angle	16°	max. length	120 mm
type of optics	1 x tripple lens	max. diameter	40 mm
colour temperature	cool white	front glass	6 mm tempered
power source	1 x protected rechargeable battery Li-Ion 18650	weight	165 g
switch type	by tightening on/off	weight in water	95 g
		max.operation depth	200 m
		light source	3 x XPG2 LED CREE®

**LEDONE**  
MINI

**LEDONE**



up to:



400 lm  
light output

operation  
depth

~~~~~  
200 M

3 years  
warranty





for more  
check our  
website

## LED ONE

simple and rugged construction, long burn time and enhanced light output. This is what call a genuine backup light.



## LED ONE MINI

A miniature, durable and reliable version of the all-round backup torch LED ONE



## LED ONE + LED ONE MINI set contains:

- 1 x LED ONE
- 1 x LED ONE MINI
- 1 x set of silicone bands



## SPECIFICATION

|                    | LED ONE MINI                 | LED ONE                   |                     | LED ONE MINI                     | LED ONE |
|--------------------|------------------------------|---------------------------|---------------------|----------------------------------|---------|
| light output       | up to 400 lm                 | up to 400 lm              | material            | hard anodised aluminium / Delrin |         |
| spot angle         | 6°                           | 6°                        | max. length         | 126 mm                           | 197 mm  |
| light source       | 1 x XPL LED CREE®            |                           | max. diameter       | 43 mm                            | 43 mm   |
| type of optics     | 1 x lens                     | 1 x lens                  | front glass         | 6mm tempered                     |         |
| total power        | 5 W                          | 5 W                       | weight              | 145 g                            | 273 g   |
| colour temperature | cool white                   | cool white                | weight in water     | 95 g                             | 140 g   |
| power source       | 2 X lithium batteries CR123A | 3 x AA alkaline batteries | max.operation depth | 200 m                            |         |
| switch type        | by tightening on/off         | by tightening on/off      |                     |                                  |         |

# LED STINGRAY 1000 lm VIDEO



2×1000 lm  
light output



120°  
beam angle



10 W  
total power





for more  
check our  
website

# LED STINGRAY VIDEO SET

Excellent video light set for traveling divers. 2 x 1000 lumens of widely distributed light.

Complete set, no additional parts needed – just add your camera on and go diving.

LED STINGRAY VIDEO is a tough and powerful compact video torch with a rechargeable battery and 200m depth rating.

LED STINGRAY VIDEO is a torch with 1000 lumens output weighing only 130g and just 12cm long!

The rechargeable 18650 battery will power for 1hr or more.



## LED STINGRAY VIDEO set contain:

- 2 x LED STINGRAY VIDEO
- 2 x rechargeable battery  
Li-Ion 18650/3000mA
- 1 x pouch for storage batteries
- 1 x double USB charger
- 1 x wall adapter
- 2 x flexible arms with mounting for  
LED STINGRAY VIDEO SET
- 1 x trail for camera and flexible arm
- 1 x plastic box for the set



## SPECIFICATION

|                    |                                             |
|--------------------|---------------------------------------------|
| light output       | up to 2 x 1000 lm                           |
| beam angle         | 120°                                        |
| light source       | 3 x XPG2 LED CREE®                          |
| type of optics     | none                                        |
| colour temperature | cool white                                  |
| power source       | protected rechargeable battery Li-Ion 18650 |
| switch type        | by tightening on/off                        |

|                     |                                  |
|---------------------|----------------------------------|
| material            | hard anodised aluminium / Delrin |
| max. length         | 120 mm                           |
| max. diameter       | 40 mm                            |
| front glass         | 6 mm tempered                    |
| weight              | 130 g                            |
| weight in water     | 95 g                             |
| max.operation depth | 200 m                            |

LED STINGRAY VIDEO SET

# CLICK MOUNT





for more  
check our  
website

Ammonite System Accu Click Mount –  
a new way of a battery mounting to a waist belt.



The whole system contains two parts, accumulator clamp made of Delrin fixed on a battery housing and titanium plate placed on a waist belt on the harness.

By using Accu Click Mount the battery might be easily placed as last part of the equipment just by placing the clamp pin in a titanium plate slide and pushing the battery down until you hear the click sound. The battery taking off is also very easy. Just pull it up and take it out from the plate.



## SPECIFICATION

|                 |                    |
|-----------------|--------------------|
| Material        | Delrin® / titanium |
| Max. height     | 167 mm             |
| Max. width      | 100mm              |
| Weight          | 118g               |
| weight in water | 65g                |

# MODULAR GOODMANHANDLE





for more  
check our  
website

Modular Goodman Handle can be used with just a head light or  
with a umbilical light & a scooter loop.  
It can be easily adjusted whenever is required.



No tools required  
The torch kit can be assembled very quickly with just your fingers.  
No Allen keys or screwdriver required.

One screw to connect all the elements  
All parts combined and secured with one screw going through  
the whole construction.



## SPECIFICATION

|                 |                                   |
|-----------------|-----------------------------------|
| Material        | Delrin® / hard anodised aluminium |
| Max. height     | 100 mm                            |
| Max. width      | 130mm                             |
| Weight          | max 110g                          |
| weight in water | max 50g                           |

MODULAR GOODMAN HANDLE



for more  
check our  
websites

ACCESSORIES



MODULAR  
GOODMAN  
HANDLE



STANDARD  
GOODMAN  
HANDLE



GOODMAN  
HANDLE SOFT



DOUBLE  
GOODMAN  
HANDLE



SIDEMOUNT  
BUCKLE



CLICK  
MOUNT



E/O  
CONNECTING  
CABLE



SIDEMOUNT  
CONNECTING  
CABLE



HD  
CONNECTING  
CABLE



for more  
check our  
website



9 Ah  
BATTERY  
PACK



10 Ah  
BATTERY  
PACK



14 Ah  
BATTERY  
PACK



24 Ah  
BATTERY  
PACK

CUSTOMIZE  
YOUR GEAR  
AND UNLEASH  
IT'S FULL  
POTENTIAL



LED ONE  
SILICONE  
BANDS



LED HELIOS  
SILICONE  
BANDS



PROTECTIVE  
CAP



PROTECTIVE  
PLUG

ACCESORIES



[www.ammonitesystem.com](http://www.ammonitesystem.com)